

Accommodating Multiple Learning Styles

“TEACHING IN THE 21ST CENTURY: New Solutions to New Problems”

3 Semester Hours of Graduate Credit

Learn how to prevent students' destructive and self-destructive behavior.

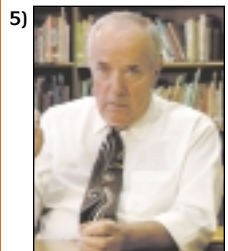
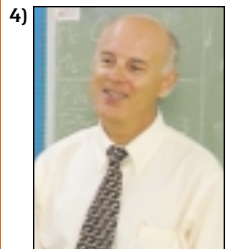
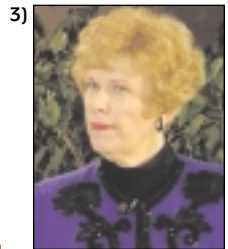
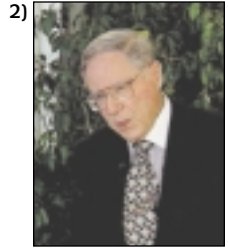
With this course you will explore five areas that are critical to effective teaching in the 21st century:

- 1) Character Education with Dr. Thomas Lickona
- 2) Student-Teacher Relationships with Dr. William Glasser
- 3) Multiple Intelligences with Dr. Sue Teele
- 4) Student Hyperactivity with Hank Benjamin
- 5) Responsibility Education with Doug Naylor

IN THIS COURSE, YOU WILL LEARN HOW TO DEAL EFFECTIVELY WITH STUDENTS WHO ARE:

- continually hyperactive in your classroom.
- disrespectful of themselves and others.
- consistently underachieving.
- rebellious and hard-to-reach.
- irresponsible and disruptive.

With this course, you will gain valuable new skills that will enable you to build positive relationships with your students and successfully teach those students who have previously been “unreachable.”



**EARN VALUABLE GRADUATE CREDIT
FROM AN ACCREDITED COLLEGE
Enroll Today! (800) 486-8650**